

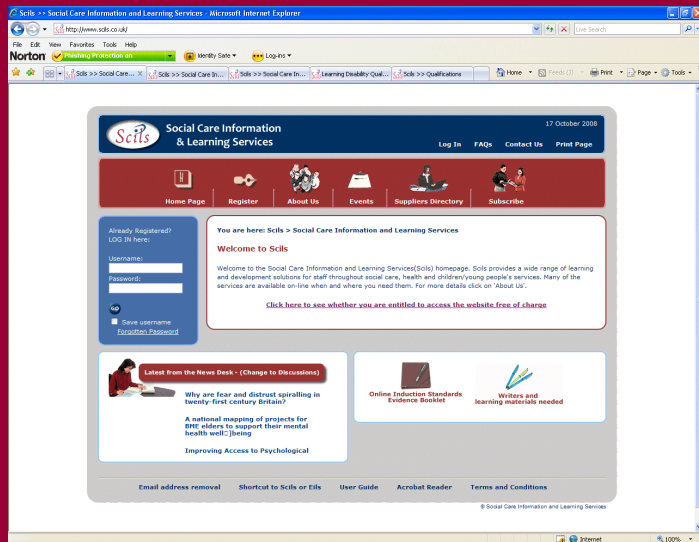
Welcome

**April Registered
Managers Network**

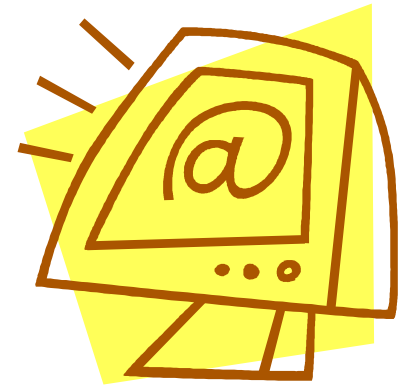


www.scils.co.uk

www.eils.co.uk



On the sites



- Two websites that provide learning materials and information
- Enabling organisations to meet learning needs
- Over 250 learning sessions on the two websites

Individual Learning Sessions



- Complete individually
- Up to one and a half hours in length
- Introduction, parts, activities, summary, reading list, assignment
- Evidence Booklets
- Assessment In-house – Sample Answers
- Printable Version
- Certificate and Evaluation of Learning

Group Learning Sessions



- Print out and run with a group of staff
- Objectives, links to awards, activities, timings, handouts and a step by step approach to deliver the training
- Last up to one and a half hours
- Full pack for the Care Certificate including evidence booklets
- A Certificate and Evaluation of Learning is available for each Learning Session

Personal Development Plan



- Register learners and setup your organisational structure
- Development plans consisting of:
 - Scils/Eils materials
 - free text entries
 - qualifications and standards
 - your own resources
- Record and evidence the completion of plans
- Access completion statistics for your learner/staff group
- Multiple choice tests

News Desk



- Over 60 Social Care / Health / Education websites visited
- A weekly update of key documents, new policies, legislation and provide summary and link direct to source.
- Combines relevant stories from a variety of news sites – saving you time by having everything in one place
- An optional email is sent out giving details of updates – the email also gives information on updates to the website – new facilities etc



Access

- Funded by Care Development East for the county of Suffolk
- Registration Number: 211SFIN
- Visit www.scils.co.uk and click on Register
- Contact: stephen.kitsios@scils.co.uk



CARE DEVELOPMENT EAST

KICK START A CAREER IN CARE

An exciting new scheme which provides a **£750 bonus** for new starters into a CQC registered provider in Suffolk

How does it work?

The Kick Start for Care scheme provides a £750 bonus for new starters into a CQC registered provider in Suffolk so this is a great incentive those looking to move into the Social Care Sector.

Who is eligible?

New starters are eligible for this bonus if they haven't been working in the care industry for previous 2 years OR have come straight from education (e.g., college, sixth form, apprenticeship).

How can I get involved?

- A care provider must employ the person for a minimum of 8 hours per week.
- The new starter must work for 12 weeks.
- Care provider must state in the first week of the person's employment that they have a new starter.

Find out more
info@caredevelopmenteast.co.uk

Apply Today



Supporting Recruitment & Retention

The Kick Start for Care scheme provides a £750 bonus for new starters into a CQC registered provider in Suffolk, so this is a great incentive for those looking to move into the Social Care Sector.

New starters are eligible for this bonus if they haven't been working in the care industry for the previous 2 years OR have come straight from education (e.g., college, sixth form, apprenticeship).

The scheme has been a fantastic success with 222 applications as at 1st February and 105 have completed their 12 week qualifying period.

Due to this success, Suffolk County Council have extended this funding into the Spring meaning that even more individuals can be supported into a career in care.

Upskilling The Workforce



COMPLETE CARE TRAINING HUB

BEHAVIOUR AND THE LAW (FOUNDATION CYP/ACS) THEORY WORKSHOPS

This **one-day** workshop consists of two elements, the **legal** framework and the **theory** of de-escalation.

It supports staff to gain a better understanding of their **rights** and **responsibilities** and to cope with all levels of behaviour.

Each programme is consistently updated to reflect Government policies and new thinking.

Theory programme:

- Legal aspects around our rights and responsibilities
- Potential causes of difficult behaviour
- Methods to identify strategies that de-escalate the situation
- Incident recording, risk assessment and proactive planning

• **Dates:** May – November 2023

• **Time:** 9am – 4pm

• **Location:** Suffolk

• Refreshments and lunch are provided

• Refundable ticket upon attendance at the workshop

Learn More



COMPLETE CARE TRAINING HUB



Tickets



SCAN ME

For any questions contact us at kelly@caredevelopmenteast.co.uk

Launching in June

Suffolk County Council working with CDE to pilot the training for people to develop LD capacity.

Training will include PBS, De-escalation Training & Law, Resilience, Oliver McGowan, Sign of Safety

Peer Support.

Save The
Date –
16TH May



Dementia Marketplace

Join us as part of Dementia Action Week!
Hosted by the Suffolk Dementia Action Partnership and Care Development East.

Explore the support, advice, and information available for people living with dementia and their caregivers in Suffolk.
We have speakers throughout the day covering topics on:

- Living well with Dementia - Peter Berry and Deb Bunt authors of "Slow Puncture: Living Well with Dementia".
- Exploring memory concerns
- Recognising and supporting carers
- Keeping safe
- SPECAL approach to dementia care



Tuesday 16th May 2023



10am - 4pm



Trinity Park, Conference and events centre, IP3 8UH

Tickets



SCAN ME

- Pop-in Event with Market Place stalls
- Refreshments provided
- Free parking - shuttle bus available from the car park
- Quiet zone and facilitated activity space for those with Dementia

For more information contact Kelly@caredevelopmenteast.co.uk

Dementia
Action
Partnership



To create a Dementia Friendly Suffolk



Show social care
a little love

#SupportSocialCare



CARE
DEVELOPMENT
EAST

Suffolk Care Awards

Awards for Care Excellence in Suffolk



CARE
DEVELOPMENT
EAST

Suffolk Care Awards

Awards for Care Excellence in Suffolk

Any Questions?

Next Registered Managers Meeting

Thursday 18th May

2.00 to 3.30pm

Holiday Inn, Copdock, Ipswich

